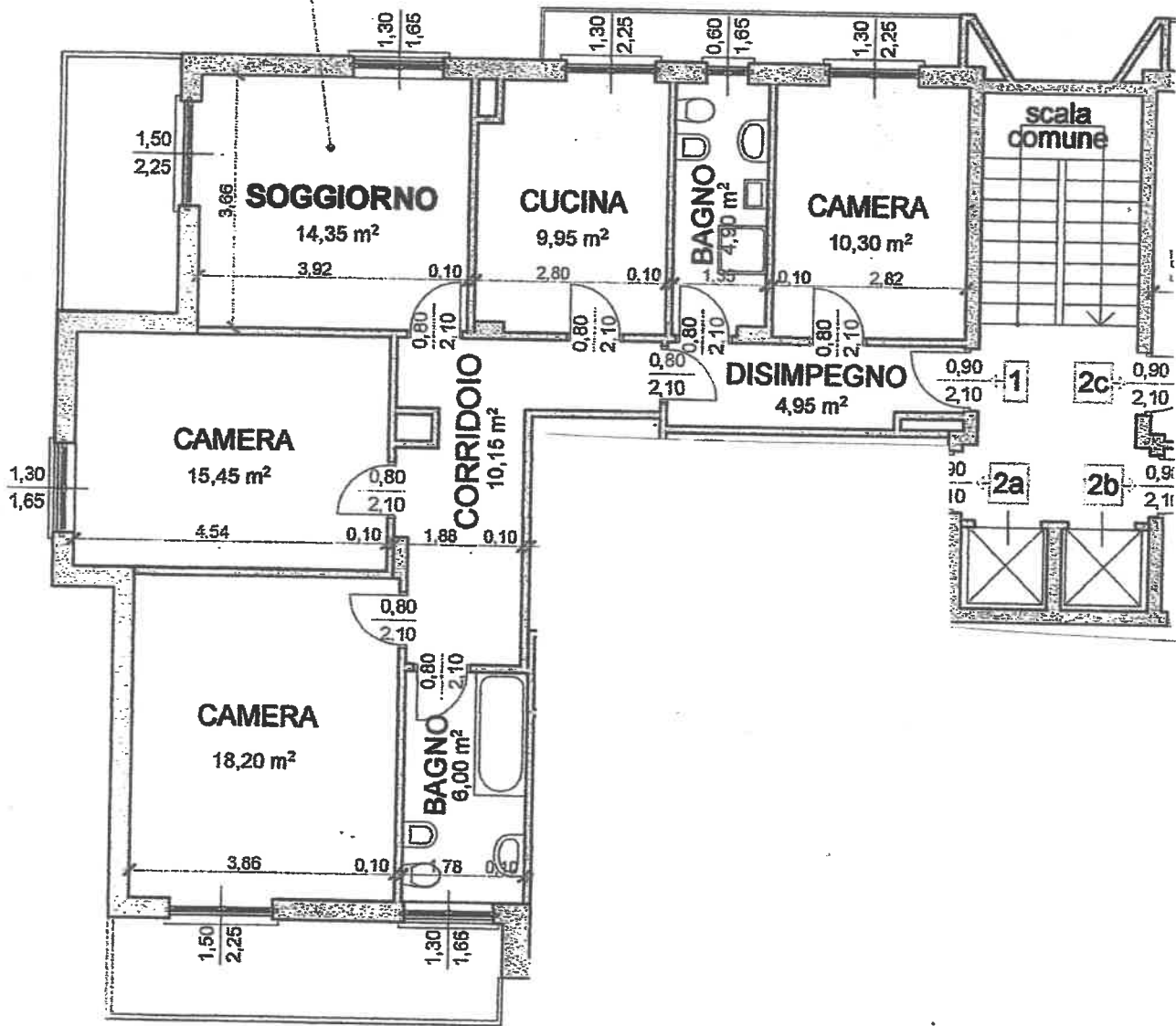


$$\text{RAI} = \frac{14,35 \text{ m}^2}{5,51 \text{ m}^2} = 2,60$$

$$\text{RAI} = \frac{13,90 \text{ m}^2}{3,37 \text{ m}^2} = 4,$$



Nuovo Appartamento di 94,25 m² calpestabili
Superficie lorda = 110,00 m²